

OHS eNews

December 2018

Farm and ranch technical rules

On Dec. 1, 2018, waged, non-family farm and ranch workers have similar rights and protections as other working Albertans. The changes address workplace hazards, safety training and maintenance of equipment. This [flip book](#) provides information to help employers and workers on farms and ranches understand their roles.

Fair Practices Office

The new, independent Fair Practices Office will provide a single point of access to help injured workers navigate the workers' compensation system. Albertans who wish to reach the Fair Practices Office, can call toll-free 1-866-427-0115 or visit fpoalberta.ca

Footwear in the workplace

The OHS Code has been amended to prohibit employers from requiring workers to use footwear that may pose a risk to their health and safety. The new rule comes into force Jan. 1, 2019. It does not affect the OHS Code requirements about protective footwear. See our bulletin on [hazardous footwear](#)

Working in extreme cold

Understanding the health and safety risks involved with working in extreme temperatures can help employers protect their workers. While this [information](#) is most relevant to outdoor workers, it may also help workers in indoor environments.

- [Slips, trips and falls](#)
- [Snow and ice on commercial vehicles](#)
- [Working in cold infographic](#)
- [Working safely in the heat and cold](#)

Contact OHS

1-866-415-8690 (toll-free)
780-415 -8690 (Edmonton)
TTY: 1-800-232-7215
TTY: 780-427-9999 (Edmonton)

[Report an Incident](#)

[PSI Online Reporting](#)

OHS information for workers and employers

Looking for information about Alberta's OHS legislation? Resources to help guide you through some of the legislative requirements can be found at the [OHS Resource Portal](#).

Employer Records

The Employer Records report is [available online](#) to all Albertans and provides an integrated view of employer-specific OHS data. In particular, it contains more than 290,000 employers' information on:

- WCB injury, disease and fatality statistics,
- industry and provincial average;
- whether the employer has a certificate of recognition (COR);
- administrative penalties, orders, tickets issued;
- web link for investigation reports;
- acceptances/approvals issued; and
- convictions.

Health and safety webinars

Improve your understanding of the new OHS rules by participating in interactive webinars or by watching a prerecorded version. More information can be found [here](#).

[Subscribe/Unsubscribe to eNews](#)

©2018 Government of Alberta | December 2018



Incidents recently reported to the OHS Contact Centre

These are summaries of selected work-related incidents reported to Alberta OHS. The summaries are based on information obtained as soon as possible after the incident. Because they are being investigated with the employers involved, no additional information can be provided. Use these reported incidents as ways to start conversations in your workplaces about how they could be prevented.

Pump not locked out

A worker was helping with maintenance on a drilling rig mud pump, rotating the pump manually using a 1.2 metre long metal bar. The pump was not locked out and started on its own. The metal bar struck the worker who was admitted to hospital. *Mining and Petroleum Development*

Worker injured in propane explosion

An equipment operator was using an excavator with a hydraulic shear attachment to cut through a propane tank. A large amount of propane was released, resulting in a fire and explosion. The worker was admitted to hospital. *Manufacturing and Processing*

Fall from trailer

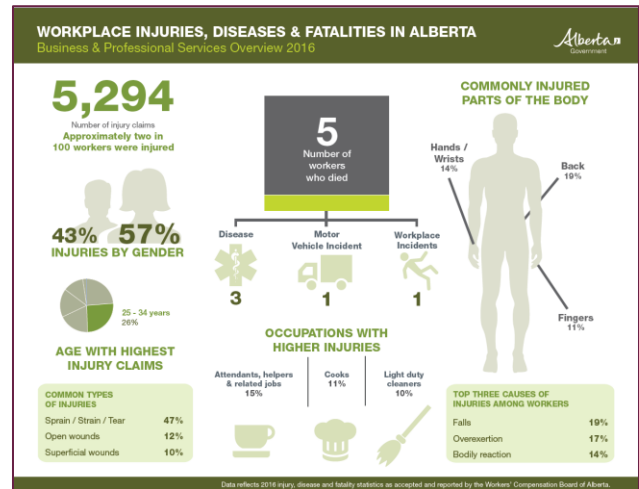
A truck driver was at the emulsion facility picking up product. The driver went to the top of the trailer and attempted to open the hatch and fell approximately four metres to the ground. The worker was admitted to hospital. *Transportation*

Fall from step ladder

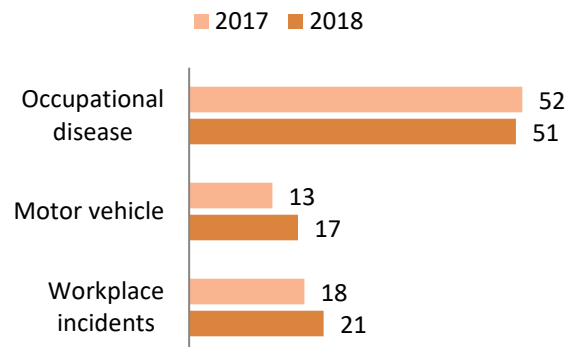
A worker was descending a six foot portable step ladder when the worker's foot slipped between the second and third rungs. The worker fell backwards to the ground, breaking a leg. The worker was admitted to hospital. *Business, Personal and Professional Services*

Infographics for 2016

Find them [here](#).



Fatalities accepted by WCB-Alberta (January 1 to August 31)



Quick Links

- [AB OHS legislation](#)
- [Partnerships in Injury Reduction](#)
- [Workplace incidents](#)
- [Motor vehicle incidents](#)
- [Occupational diseases](#)
- [Alberta Queen's Printer](#)